

Wan Chai Development Phase II - East
Central - Wan Chai Bypass at Wan Chai
 Contract: HK/2009/02

Remaining Works Programme

項目	工序	Jan-19													Wc																														
		Week 54				Week 55				Week 56				Week 01		Week 02																													
		1	2	3	4	5	6	7	8	9	10	11	12	13	14	15	16	17	18	19	20	21	22	23	24	25	26	27	28	29	30	31	1	2	3	4	5	6	7	8	9	10	11	12	13
1	Removal of Temporary Storage of Backfill material at Portion 5	Portion 5 運泥回填 WCR1 停止運泥因為Close P5 Exit													Portion 5 運泥回填 WCR1																														
2	Seawall海床	受泥區原海床													填石 (400m ² 石面及鋪砂水(400m ²))																														
3	地面墊層及 100mm Subbase																																做墊層												
4	舊直升機場, 海墜及梯台																																舊直升機場Landing 清場 入機												
5	打D-Wall	打D-Wall 至+1.5 (48m) 回填													打D-Wall remaining D-Wall 至+1.5 (15M) 回填																														
6	U Channel & 沙井																																安裝預埋石渠 北面東段4個catchpit+3000渠 (108m) DN8, 1 DN8, 2 北面西段1個catchpit+300, 3750渠 (56m) DN1, 1 北面中段3000渠 DN1, 1 北面中段3000渠 北面中段3750 to												
7	渠網及 沙井																																沙井 7350 and 7349 225渠由DN8, 5至7349 225渠由7350和7349至BCO CCTV 7352, 7340, 7328, 7327 試裝 7353, 7338, C1, 3												
8	IRRIGATION PIPE	VVV542 (21/12/18)													subsoil drainage approval of design				VVV046 驗收土																										
9	Fresh Water Main	TTA approved in TMLG Meeting 5/12/18																																											
10	HRR 馬路	AREA ABCD remove PMSMA Relay Area ABCD PMSMA AREA E remove and relay BC+PMSMA AREA F remove and relay BC+PMSMA REMEDIAL TO CONCRETE LAYBY																																											
10.1	HRR FLYOVER REMAINING WORK	V0258 MODIFICATION WORK AT ABUTMENT ROOM V0253 PROVIDE STAINLESS STEEL LADDER AT ABUTMENT ROOM																																											
11	還原運泥街 Stage 0.5	EYA																																											
12	博覽道東, WCR1 & WCR3 未完成工作	* Portion 2 Zone 1 * Zone 2a upto end of EYA * Portion 2 Zone 2b REMEDIAL TO EXPO DRIVE COVERED WALKWAY WCR3 填 Sub Base (100mm thk, 7000m ²) Caisson seawall defects 海墜填墊如下COPING (COMMENCEMENT DATE TO BE CONFIRMED) WCR1&3 MAKE GOOD ARMOUR SLOPE PROFILE																																											

Remaining Works Programme

項目	工序	Feb-10				Week 04				Week 05				Week 06				19-Mar				Week 08				Week 09				Week																			
		14	15	16	17	18	19	20	21	22	23	24	25	26	27	28	1	2	3	4	5	6	7	8	9	10	11	12	13	14	15	16	17	18	19	20	21	22	23	24	25	26	27	28	29	30	31	1	2
1	Removal of Temporary Storage of Backfill material at Portion 5																																																
2	Seawall 海床	製 Armour 夾制淤泥及原海床																																															
3	地面墊仔 100mm Subbase	碎石墊 (100mm) (Whole Portion 3&4)																																															
4	舊直升機場, 海墜及梯台	pile CAPING BEAM 填土 Rockfill Level 第二階段海墜 海墜第三階段 填土 填土 填土 填土 1st Sea Wall Co 製 Precast Unit																																															
5	打 D-Wall																																																
6	U Channel & 沙井	4個 catchpit #3000 渠 (103m) DNS. 4 3個 catchpit #3000 渠 (120m) DNS. 6 DNS. 7 3000 渠 (60m) ONL. 2 (60m) BACKFILL																																															
7	渠網 & 沙井	NR. 3 & 7350 (24m) 回流 19, 7356 沙																																															
8	IRRIGATION PIPE	灑花水 3個 WATER POINT & PLANTER #1500 WATER METER BOX #01 #W046 WSD approval PLANTER #1500 #W046 概完工																																															
9	Fresh Water Main	STAGE 1 TTA (HRR) + HYIS AECOM OFFICE (notional, to be confirmed) STAGE 2 TTA (HRR)																																															
10	HRR 馬路	an for footing and end blocks place order and delivery of the steel barrier ALONG HRR Installation of precast end block concreting of footing Installation of barrier OPENING OF HRR (notional, to be confirmed) waiting curb, see result																																															
10.1	HRR FLYOVER REMAINING WORK	carry out work install ladder																																															
11	邊界理邊街 Stage 0.5	邊界理邊街 Stage 0.5 (notional, to be confirmed) PHASE 1 (notional, to be confirmed)																																															
12	博覽道東, WCR1 & WCR3 未完成工作	subbase 在 conjunction with sketch SK3213D subbase 石渣 石渣 石渣 HANDOVER OF EYA (notional, to be confirmed) WCR2 圍鐵欄 (150M) (TBC Alignment) subbase 圍鐵欄 邊界理邊街 (to be confirmed) WCR 123 Make good Armour Slope Profiles																																															

Wan Chai Development Phase II - East
Central - Wan Chai Bypass at Wan Chai

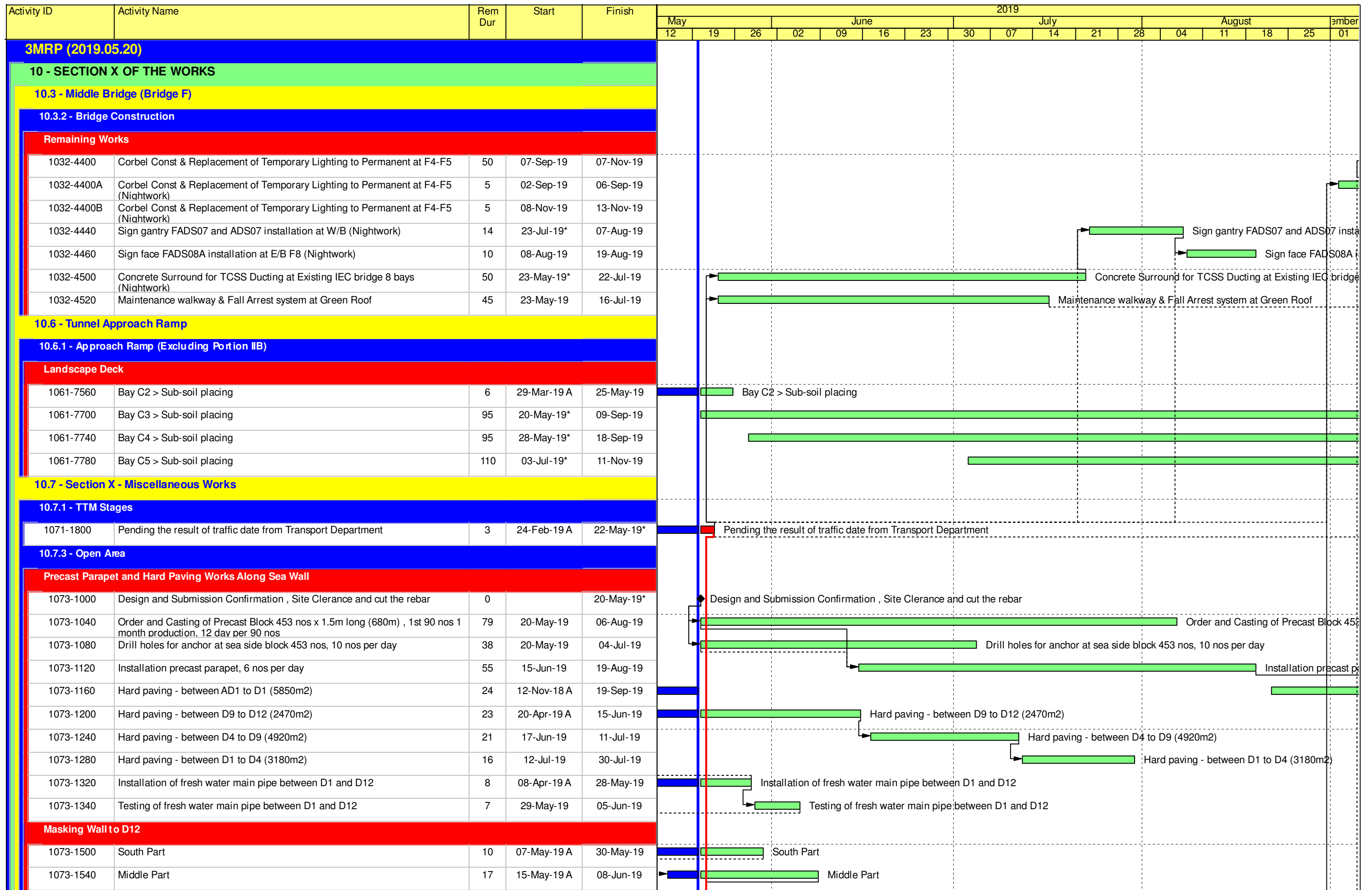
Contract: HK/2009/02

Remaining Works Programme

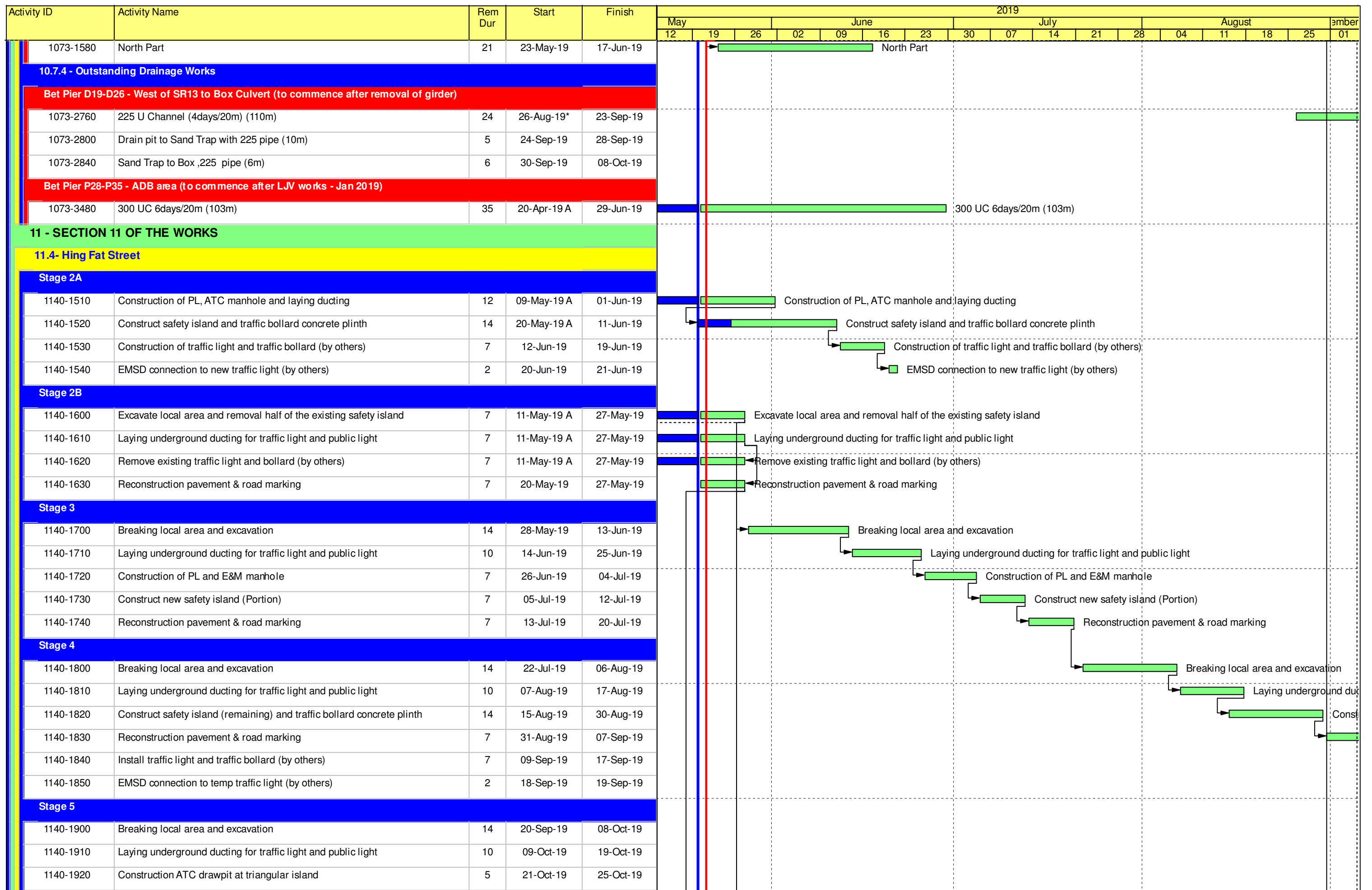
項目	工序	15-Apr																																																			
		Week 11							Week 12							Week 13							Week 14							Week 15							Week 16							Week 17									
		5	6	7	8	9	10	11	12	13	14	15	16	17	18	19	20	21	22	23	24	25	26	27	28	29	30	1	2	3	4	5	6	7	8	9	10	11	12	13	14	15	16	17	18	19	20	21	22	23	24	25	26
1	Removal of Temporary Storage of Backfill material at Portion 5																																																				
2	Seawall海床																																																				
3	地面壓仔& 100mm Subbase																																																				
4	舊直升機場, 海墜及梯台																																																				
5	打D-Wall																																																				
6	U Channel & 沙井																																																				
7	渠網& 沙井																																																				
8	IRRIGATION PIPE																																																				
9	Fresh Water Main																																																				
10	HHR 馬路																																																				
10.1	HHR FLYOVER REMAINING WORK																																																				
11	遷原運廢物 Stage 0.5																																																				
12	博覽運東, WCR1 & WCR3 未完成工作																																																				

Wan Chai Development Phase II - East
Central - Wan Chai Bypass at Wan Chai
Contract: HK/2009/02
Remaining Works Programme

項目	工序	June																																				
		Week 18					Week 19					Week 20					Week 21					Week 22																
		27	28	29	30	31	1	2	3	4	5	6	7	8	9	10	11	12	13	14	15	16	17	18	19	20	21	22	23	24	25	26	27	28	29	30		
1	Removal of Temporary Storage of Backfill material at Portion 5																																					
2	Seawall 海床																																					
3	地面墊仔 100mm Subbase																																					
4	舊直升機塔, 海墜及梯台																																					
5	打D-Wall																																					
6	U Channel & 沙井																																					
7	渠網 & 沙井																																					
8	IRRIGATION PIPE																																					
9	Fresh Water Main																																					
10	HHR 馬路																																					
10.1	HHR FLYOVER REMAINING WORK																																					
11	還原運盛街 Stage 0.5																																					
12	博覽道東, VCR1 & VCR3 未完成工作																																					

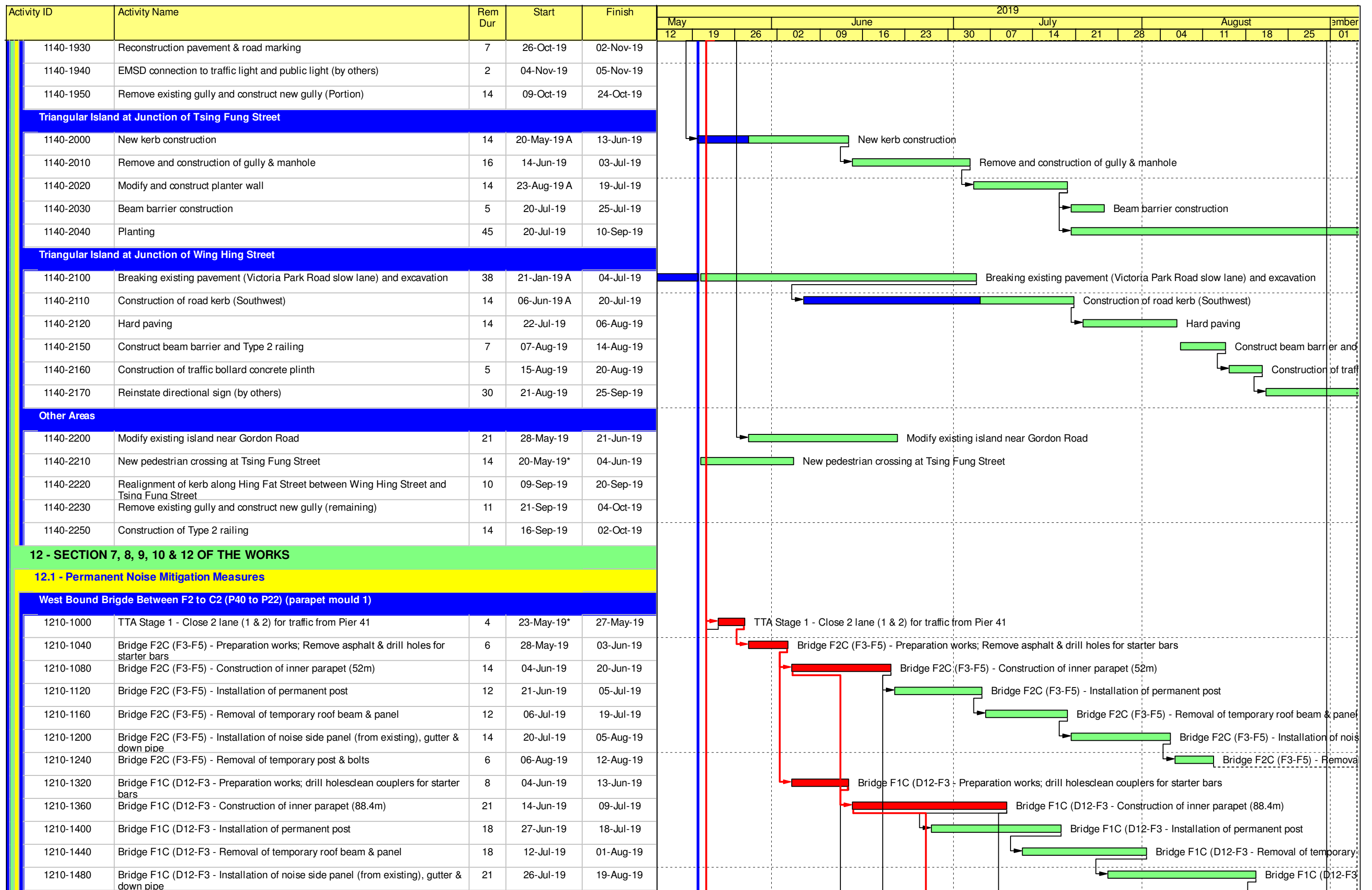


Contract HY/2009/19
Three Months Rolling Programme (20.May.2019 to 20.Aug.2019)



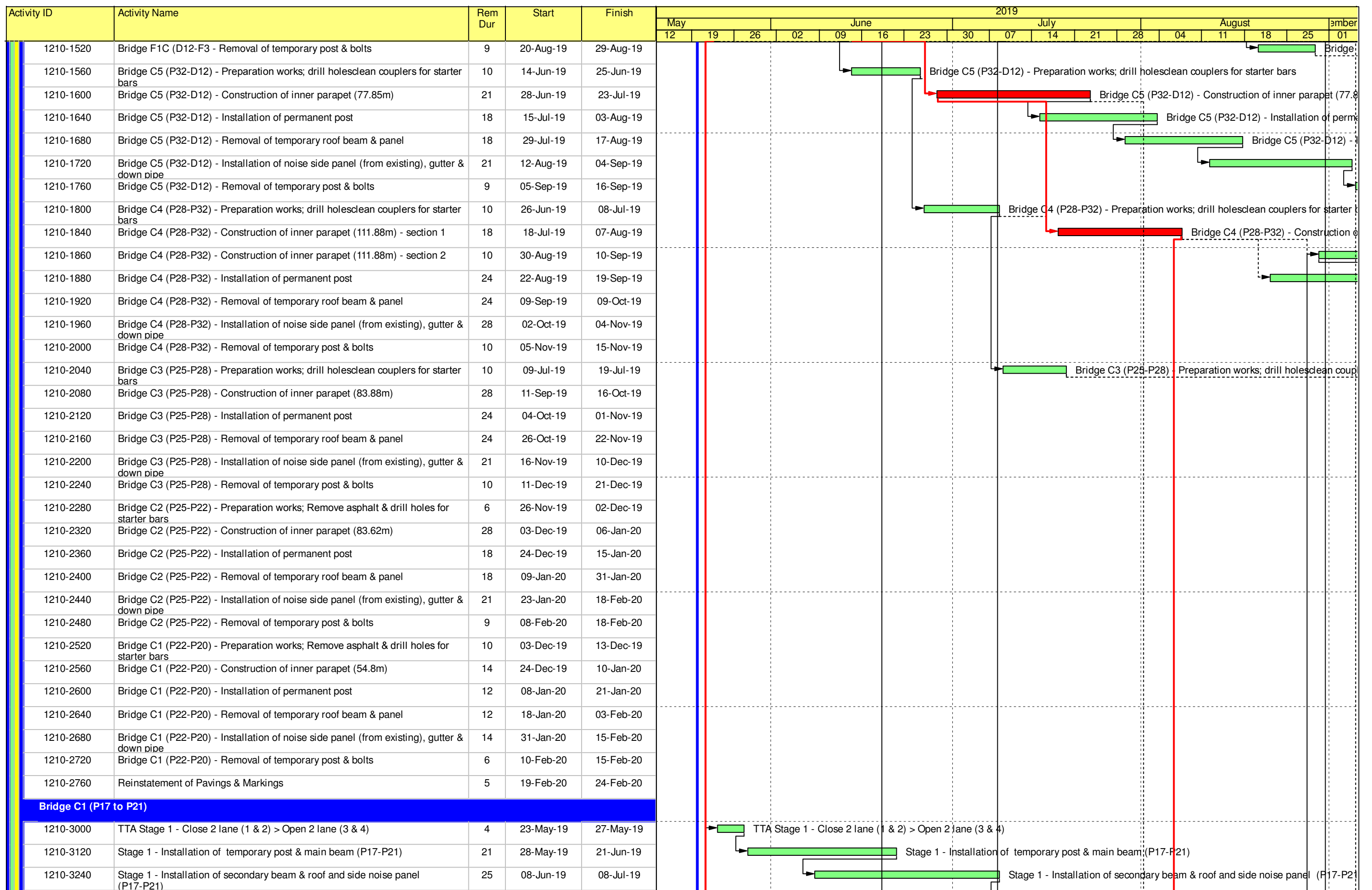
█ Remaining Level of Effort █ Remaining Work
█ Actual Level of Effort █ Critical Remaining Work
█ Actual Work ◆ Milestone

Contract HY/2009/19
Three Months Rolling Programme (20.May.2019 to 20.Aug.2019)

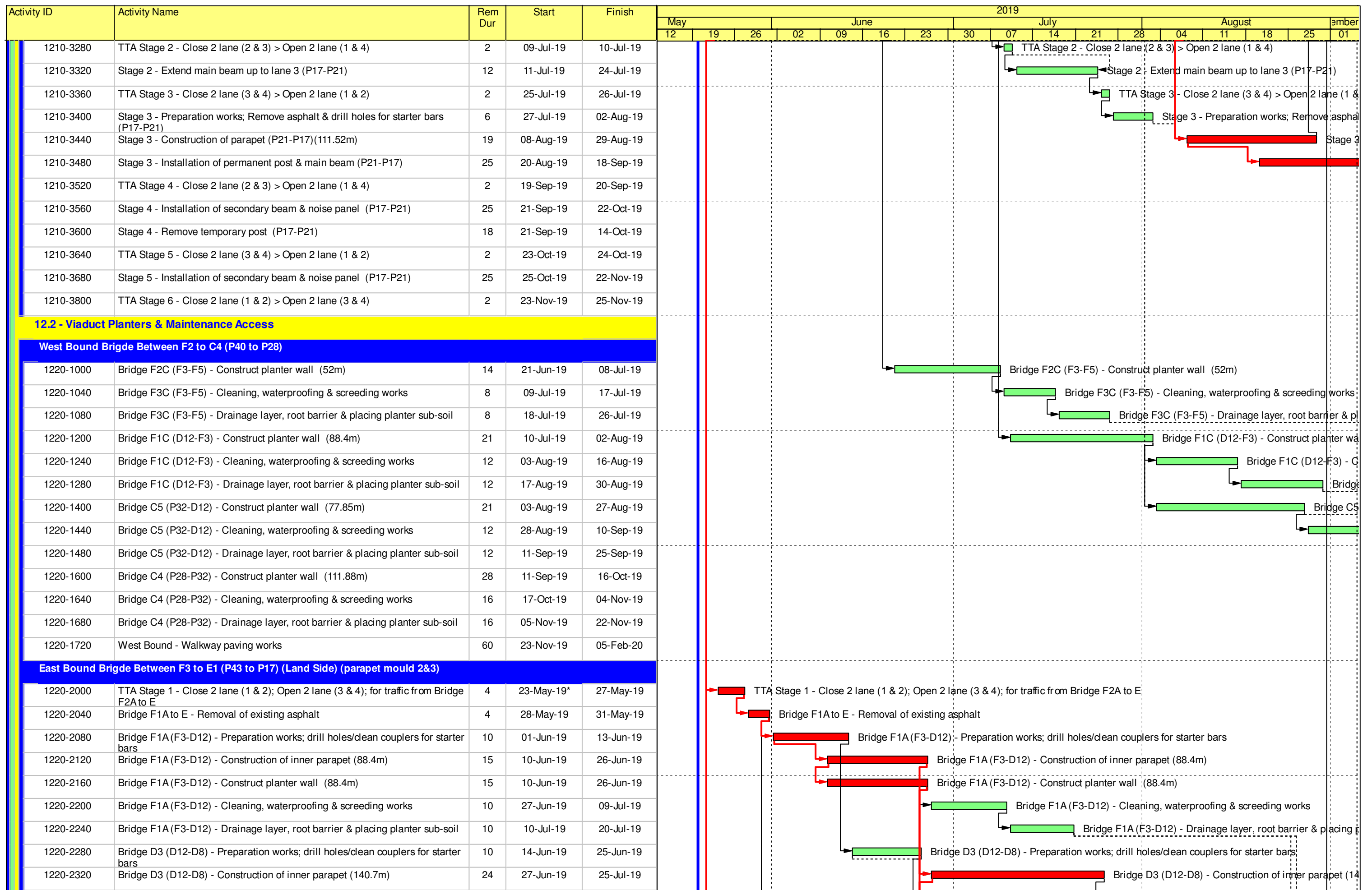


█ Remaining Level of Effort █ Remaining Work
█ Actual Level of Effort █ Critical Remaining Work
█ Actual Work ◆ Milestone

Contract HY/2009/19
Three Months Rolling Programme (20.May.2019 to 20.Aug.2019)



Contract HY/2009/19
Three Months Rolling Programme (20.May.2019 to 20.Aug.2019)



Activity ID	Activity Name	Rem Dur	Start	Finish	2019																
					May			June				July				August				September	
					12	19	26	02	09	16	23	30	07	14	21	28	04	11	18	25	01
1220-2360	Bridge D3 (D12-D8) - Construct planter wall (140.7m)	24	27-Jun-19	25-Jul-19	Bridge D3 (D12-D8) - Construct planter wall (140.7m)																
1220-2400	Bridge D3 (D12-D8) - Cleaning, waterproofing & screeding works	14	26-Jul-19	10-Aug-19	Bridge D3 (D12-D8) - Cleaning, waterproofing & screeding works																
1220-2440	Bridge D3 (D12-D8) - Drainage layer, root barrier & placing planter sub-soil	14	12-Aug-19	27-Aug-19	Bridge D3 (D12-D8) - Drainage layer, root barrier & placing planter sub-soil																
1220-2480	Bridge D2 (D8-D7) - Preparation works; drill holes/clean couplers for starter bars	10	26-Jun-19	08-Jul-19	Bridge D2 (D8-D7) - Preparation works; drill holes/clean couplers for starter bars																
1220-2520	Bridge D2 (D8-D7) - Construction of inner parapet (40m)	7	26-Jul-19	02-Aug-19	Bridge D2 (D8-D7) - Construction of inner parapet (40m)																
1220-2560	Bridge D2 (D8-D7) - Construct planter wall (40m)	7	26-Jul-19	02-Aug-19	Bridge D2 (D8-D7) - Construct planter wall (40m)																
1220-2600	Bridge D2 (D8-D7) - Cleaning, waterproofing & screeding works	4	03-Aug-19	07-Aug-19	Bridge D2 (D8-D7) - Cleaning, waterproofing & screeding works																
1220-2640	Bridge D2 (D8-D7) - Drainage layer, root barrier & placing planter sub-soil	16	08-Aug-19	26-Aug-19	Bridge D2 (D8-D7) - Drainage layer, root barrier & placing planter sub-soil																
1220-2680	Bridge D2 (D6-D4) - Preparation works; drill holes/clean couplers for starter bars	10	01-Jun-19	13-Jun-19	Bridge D2 (D6-D4) - Preparation works; drill holes/clean couplers for starter bars																
1220-2720	Bridge D2 (D6-D4) - Construction of inner parapet (120m)	20	10-Jun-19	03-Jul-19	Bridge D2 (D6-D4) - Construction of inner parapet (120m)																
1220-2760	Bridge D2 (D6-D4) - Construct planter wall (120m)	20	10-Jun-19	03-Jul-19	Bridge D2 (D6-D4) - Construct planter wall (120m)																
1220-2800	Bridge D2 (D6-D4) - Cleaning, waterproofing & screeding works	12	04-Jul-19	17-Jul-19	Bridge D2 (D6-D4) - Cleaning, waterproofing & screeding works																
1220-2840	Bridge D1 (D4-D1) - Preparation works; drill holes/clean couplers for starter bars	10	14-Jun-19	25-Jun-19	Bridge D1 (D4-D1) - Preparation works; drill holes/clean couplers for starter bars																
1220-2880	Bridge D1 (D4-D1) - Construction of inner parapet (119m)	20	04-Jul-19	26-Jul-19	Bridge D1 (D4-D1) - Construction of inner parapet (119m)																
1220-2920	Bridge D1 (D4-D1) - Construct planter wall (119m)	20	04-Jul-19	26-Jul-19	Bridge D1 (D4-D1) - Construct planter wall (119m)																
1220-2960	Bridge D1 (D4-D1) - Cleaning, waterproofing & screeding works	12	27-Jul-19	09-Aug-19	Bridge D1 (D4-D1) - Cleaning, waterproofing & screeding works																
1220-3000	Bridge D1 (D4-D1) - Drainage layer, root barrier & placing planter sub-soil	12	10-Aug-19	23-Aug-19	Bridge D1 (D4-D1) - Drainage layer, root barrier & placing planter sub-soil																
1220-3040	Bridge E (D1-E1) - Preparation works; drill holes/clean couplers for starter bars	10	26-Jun-19	08-Jul-19	Bridge E (D1-E1) - Preparation works; drill holes/clean couplers for starter bars																
1220-3080	Bridge E (D1-E1) - Construction of inner parapet (27m)	5	27-Jul-19	01-Aug-19	Bridge E (D1-E1) - Construction of inner parapet (27m)																
1220-3120	Bridge E (D1-E1) - Construct planter wall (27m)	5	27-Jul-19	01-Aug-19	Bridge E (D1-E1) - Construct planter wall (27m)																
1220-3160	Bridge E (D1-E1) - Cleaning, waterproofing & screeding works	4	02-Aug-19	06-Aug-19	Bridge E (D1-E1) - Cleaning, waterproofing & screeding works																
1220-3200	Bridge E (D1-E1) - Drainage layer, root barrier & placing planter sub-soil	4	07-Aug-19	10-Aug-19	Bridge E (D1-E1) - Drainage layer, root barrier & placing planter sub-soil																
1220-3240	East Bound (land side) - Walkway paving works	60	27-Aug-19	07-Nov-19	East Bound (land side) - Walkway paving works																
East Bound Bridge Between F3 to E1 (P43 to P17) (Sea Side) (parapet mould 2&3)																					
1220-3300	TTA Stage 2 - Close 2 lane (3 & 4); Open 2 lane (1 & 2); for traffic from Bridge F2A to E	4	28-Aug-19	31-Aug-19	TTA																
1220-3340	Bridge F3A to E - Removal of existing asphalt	4	02-Sep-19	05-Sep-19	Bridge F3A to E - Removal of existing asphalt																
1220-3380	Bridge F3A (F8-F5) - Preparation works; drill holes/clean couplers for starter bars	10	06-Sep-19	18-Sep-19	Bridge F3A (F8-F5) - Preparation works; drill holes/clean couplers for starter bars																
1220-3420	Bridge F3A (F8-F5) - Construction of inner parapet (92m)	16	13-Sep-19	03-Oct-19	Bridge F3A (F8-F5) - Construction of inner parapet (92m)																
1220-3460	Bridge F3A (F8-F5) - Construct planter wall (92m)	16	13-Sep-19	03-Oct-19	Bridge F3A (F8-F5) - Construct planter wall (92m)																
1220-3500	Bridge F3A (F8-F5) - Cleaning, waterproofing & screeding works	11	04-Oct-19	17-Oct-19	Bridge F3A (F8-F5) - Cleaning, waterproofing & screeding works																
1220-3540	Bridge F3A (F8-F5) - Drainage layer, root barrier & placing planter sub-soil	11	18-Oct-19	30-Oct-19	Bridge F3A (F8-F5) - Drainage layer, root barrier & placing planter sub-soil																
1220-3580	Bridge F2A (F5-F3) - Preparation works; drill holes/clean couplers for starter bars	10	19-Sep-19	30-Sep-19	Bridge F2A (F5-F3) - Preparation works; drill holes/clean couplers for starter bars																
1220-3620	Bridge F2A (F5-F3) - Construction of inner parapet (52m)	9	04-Oct-19	15-Oct-19	Bridge F2A (F5-F3) - Construction of inner parapet (52m)																
1220-3660	Bridge F2A (F5-F3) - Construct planter wall (52m)	9	04-Oct-19	15-Oct-19	Bridge F2A (F5-F3) - Construct planter wall (52m)																
1220-3700	Bridge F2A (F5-F3) - Cleaning, waterproofing & screeding works	8	16-Oct-19	24-Oct-19	Bridge F2A (F5-F3) - Cleaning, waterproofing & screeding works																
1220-3720	Bridge F2A (F5-F3) - Drainage layer, root barrier & placing planter sub-soil	8	25-Oct-19	02-Nov-19	Bridge F2A (F5-F3) - Drainage layer, root barrier & placing planter sub-soil																
1220-3760	Bridge F1A (F3-D12) - Preparation works; drill holes/clean couplers for starter bars	10	02-Oct-19	14-Oct-19	Bridge F1A (F3-D12) - Preparation works; drill holes/clean couplers for starter bars																

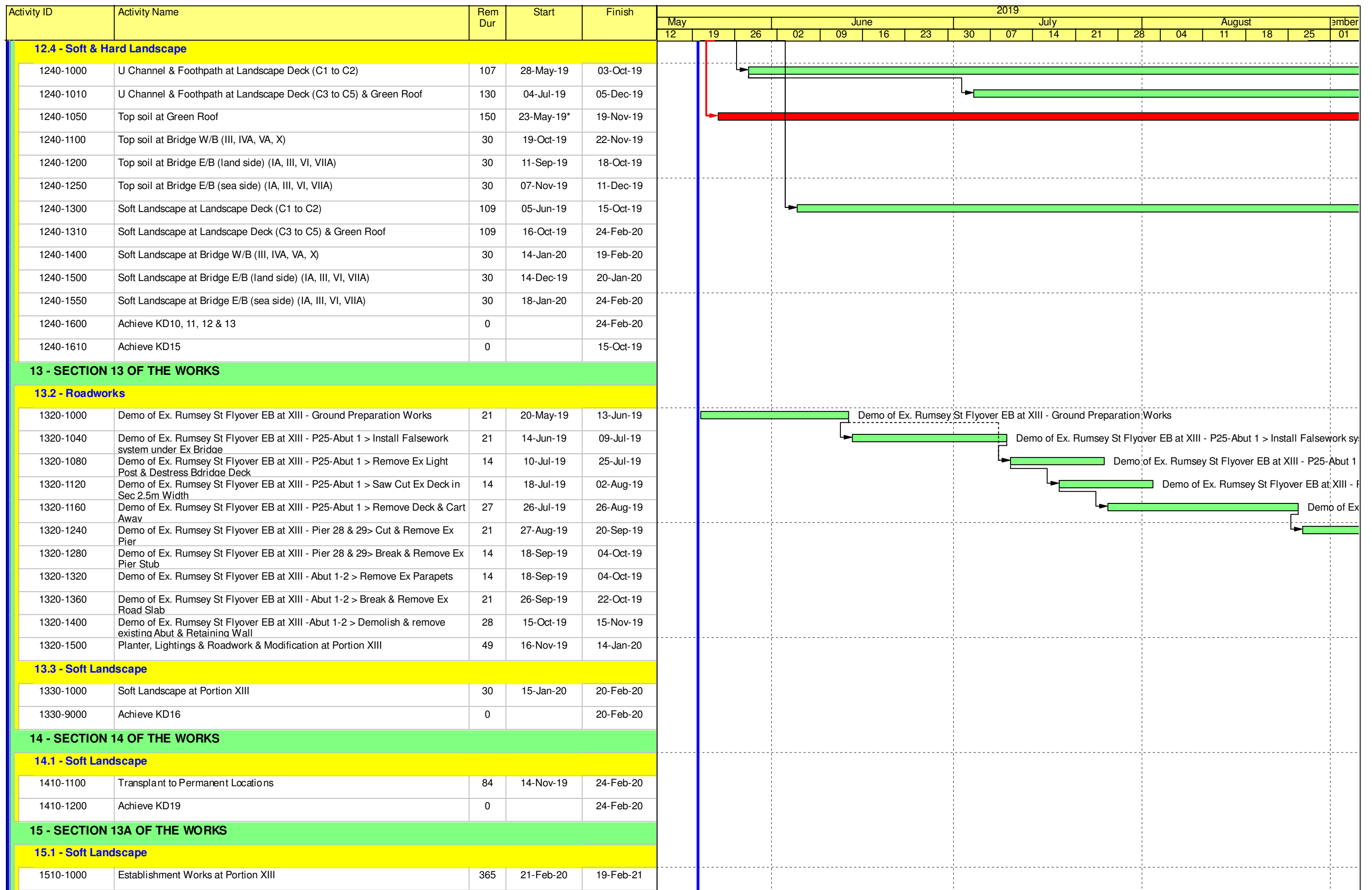
	Remaining Level of Effort		Remaining Work
	Actual Level of Effort		Critical Remaining Work
	Actual Work		Milestone

Contract HY/2009/19
Three Months Rolling Programme (20.May.2019 to 20.Aug.2019)

Activity ID	Activity Name	Rem Dur	Start	Finish	2019																
					May			June				July				August				September	
					12	19	26	02	09	16	23	30	07	14	21	28	04	11	18	25	01
1220-3800	Bridge F1A (F3-D12) - Construction of inner parapet (88.4m)	15	16-Oct-19	01-Nov-19																	
1220-3840	Bridge F1A (F3-D12) - Construct planter wall (88.4m)	15	16-Oct-19	01-Nov-19																	
1220-3880	Bridge F1A (F3-D12) - Cleaning, waterproofing & screeding works	10	02-Nov-19	13-Nov-19																	
1220-3920	Bridge F1A (F3-D12) - Drainage layer, root barrier & placing planter sub-soil	10	14-Nov-19	25-Nov-19																	
1220-4020	Bridge D3 (D12-D8) - Preparation works; drill holes/clean couplers for starter bars	10	15-Oct-19	25-Oct-19																	
1220-4060	Bridge D3 (D12-D8) - Construction of inner parapet (140.65m)	24	02-Nov-19	29-Nov-19																	
1220-4100	Bridge D3 (D12-D8) - Construct planter wall (140.65m)	24	02-Nov-19	29-Nov-19																	
1220-4140	Bridge D3 (D12-D8) - Cleaning, waterproofing & screeding works	15	30-Nov-19	17-Dec-19																	
1220-4180	Bridge D3 (D12-D8) - Drainage layer, root barrier & placing planter sub-soil	15	18-Dec-19	06-Jan-20																	
1220-4220	Bridge D2 (D8-D4) - Preparation works; drill holes/clean couplers for starter bars	10	06-Sep-19	18-Sep-19																	
1220-4260	Bridge D2 (D8-D4) - Construction of inner parapet (160m)	28	13-Sep-19	18-Oct-19																	
1220-4300	Bridge D2 (D8-D4) - Construct planter wall (160m)	28	13-Sep-19	18-Oct-19																	
1220-4340	Bridge D2 (D8-D4) - Cleaning, waterproofing & screeding works	16	19-Oct-19	06-Nov-19																	
1220-4380	Bridge D2 (D8-D4) - Drainage layer, root barrier & placing planter sub-soil	16	07-Nov-19	25-Nov-19																	
1220-4420	Bridge D1 (D4-D1) - Preparation works; drill holes/clean couplers for starter bars	10	19-Sep-19	30-Sep-19																	
1220-4460	Bridge D1 (D4-D1) - Construction of inner parapet (119m)	20	19-Oct-19	11-Nov-19																	
1220-4500	Bridge D1 (D4-D1) - Construct planter wall (119m)	20	19-Oct-19	11-Nov-19																	
1220-4540	Bridge D1 (D4-D1) - Cleaning, waterproofing & screeding works	9	12-Nov-19	21-Nov-19																	
1220-4600	Bridge D1 (D4-D1) - Drainage layer, root barrier & placing planter sub-soil	9	22-Nov-19	02-Dec-19																	
1220-4640	Bridge E (D1-E3) - Preparation works; drill holes/clean couplers for starter bars	10	02-Oct-19	14-Oct-19																	
1220-4680	Bridge E (D1-E3) - Construction of inner parapet (77m)	14	12-Nov-19	27-Nov-19																	
1220-4720	Bridge E (D1-E3) - Construct planter wall (77m)	14	12-Nov-19	27-Nov-19																	
1220-4760	Bridge E (D1-E3) - Cleaning, waterproofing & screeding works	12	28-Nov-19	11-Dec-19																	
1220-4800	Bridge E (D1-E3) - Drainage layer, root barrier & placing planter sub-soil	12	12-Dec-19	26-Dec-19																	
1220-4840	East Bound (sea side) - Walkway paving works	60	12-Dec-19	24-Feb-20																	
12.3 - Waterworks																					
1230-1000	Irrigation System - Landscape Deck (C1 to C2)	116	20-May-19	05-Oct-19																	
1230-1010	Irrigation System - Landscape Deck (C3 to C5) & Green Roof	123	10-Sep-19	07-Feb-20																	
1230-1200	Irrigation System (Landscape Deck C1 to C2) - Testing	7	08-Oct-19	15-Oct-19																	
1230-1210	Irrigation System (Landscape Deck C3 to C5 & Green Roof) - Testing	7	08-Feb-20	15-Feb-20																	
1230-1300	Connect to watermain for Water Supply (Landscape Deck C1 to C2) - Works carried out by WSD	7	16-Oct-19	23-Oct-19																	
1230-1310	Connect to watermain for Water Supply (Landscape Deck C3 to C5 & Green Roof) - Works carried out by WSD	7	17-Feb-20	24-Feb-20																	
1230-1500	Irrigation System - Bridge W/B - at III, IVA, VA, X	90	26-Sep-19	13-Jan-20																	
1230-1600	Irrigation System - Bridge E/B (land side) - at IA, III, VI, VIIA	90	28-Aug-19	13-Dec-19																	
1230-1650	Irrigation System - Bridge E/B (sea side) - at IA, III, VI, VIIA	90	30-Oct-19	15-Feb-20																	
1230-1700	Irrigation System (E/B & W/B Bridge) - Testing	7	17-Feb-20	24-Feb-20																	
1230-1800	Connect to watermain for Water Supply (E/B & W/B Bridge) - Works carried out by WSD	7	25-Feb-20	03-Mar-20																	

█ Remaining Level of Effort █ Remaining Work
█ Actual Level of Effort █ Critical Remaining Work
█ Actual Work ◆ Milestone

Contract HY/2009/19
Three Months Rolling Programme (20.May.2019 to 20.Aug.2019)



█ Remaining Level of Effort █ Remaining Work
█ Actual Level of Effort █ Critical Remaining Work
█ Actual Work ◆ ◆ Milestone

Contract HY/2009/19
Three Months Rolling Programme (20.May.2019 to 20.Aug.2019)

Activity ID	Activity Name	Rem Dur	Start	Finish	2019															
					May			June				July				August				September
					12	19	26	02	09	16	23	30	07	14	21	28	04	11	18	25
1510-9000	Achieve KD17	0		19-Feb-21																
16 - SECTION 13B OF THE WORKS																				
16.1 - Soft Landscape																				
1610-1000	Establishment Works at Portion IA	365	25-Feb-20	23-Feb-21																
1610-1100	Establishment Works at Portion IIA	365	16-Oct-19	14-Oct-20																
1610-1200	Establishment Works at Portion III	365	25-Feb-20	23-Feb-21																
1610-1300	Establishment Works at Portion IVA	365	25-Feb-20	23-Feb-21																
1610-1400	Establishment Works at Portion VA	365	25-Feb-20	23-Feb-21																
1610-1500	Establishment Works at Portion VC	365	25-Feb-20	23-Feb-21																
1610-1600	Establishment Works at Portion VI	365	25-Feb-20	23-Feb-21																
1610-1700	Establishment Works at Portion VIIA	365	25-Feb-20	23-Feb-21																
1610-1800	Establishment Works at Portion X	365	25-Feb-20	23-Feb-21																
1610-1900	Establishment Works at Portion XIIA	365	25-Feb-20	23-Feb-21																
1610-2000	Achieve KD18	0		23-Feb-21																

 Remaining Level of Effort  Remaining Work
 Actual Level of Effort  Critical Remaining Work
 Actual Work   Milestone

Contract HY/2009/19
Three Months Rolling Programme (20.May.2019 to 20.Aug.2019)